

WORKPLACES:

HSBC LAIKI BANK, NICOSIA

HSBC Laiki Bank, Nicosia, Cyprus - New Headquarters

Appointed by the Bank to be their International Consultants advising upon the Environmental and Building Engineering aspects of the Bank's new Headquarters Building in Nicosia.

The facility is a Landmark building taking into account the truly international issues that pushed forward the frontiers of office building design.

Underfloor air-movement systems and furniture-located uplighters are only part of the energy-efficient approach conceived by AWM that commenced with a totally integrated design. HVAC systems with 25ls^{-1} per person outdoor air allows the building to use free-cooling and night-time purging concepts. The lighting solution created a benchmark $9\text{w}\text{m}^{-2}$ energy usage that is yet to be improved upon in similar buildings.

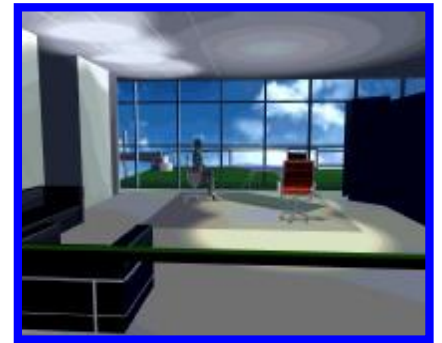
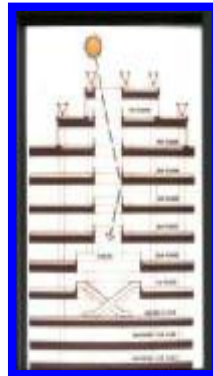
In addition to Workplace Engineering, AWM also undertook the façade engineering and podisation aspects working closely with the Architects. This resulted in an advanced building envelope that acts as an environmental moderator taking advantage of the external climatic condition when appropriate.

TOTAL PROJECT VALUE £18M

α

Φ

λ



eV

Significant modelling techniques were employed by AWM to forecast the lighting, temperature and ventilation aspects of the internal environment. A scale model of the whole building was lit by AWM using fibre optics to demonstrate the building's appearance at night.

Ω



Σ

The resulting building has won many awards and received plaudits from building professionals and laypersons alike.

